

Safety Log

Make OSHA a Safety Partner

Education and Training Div. Invites Voluntary Compliance

A consultative survey is a courtesy inspection (workplace evaluation) conducted at the specific request of an employer or employer representative. Surveys are conducted by the Division of Education and Training's occupational safety and health consultants who are experienced in identifying hazards related to such areas as machine safeguarding, electrical safety, fire prevention and protection, confined space entry, indoor air quality, respiratory protection, hearing conservation, and many other safety and industrial hygiene topics. The consultants are available to visit the workplace and identify safety and health hazards, discuss specific safety and health problems and concerns and assess the effectiveness of an employer's safety and health program.

The **Division of Compliance** and the **Division of Education and Training** function independently of one another without sharing information relative to their activities. Therefore, a request for a consultative survey or any other service from the Division of Education and Training does not increase the possibility of a compliance inspection.

Consultation Survey versus a Compliance Inspection

Although the format and objective of a compliance inspection and a consultative survey are basically the same, there are significant differences.

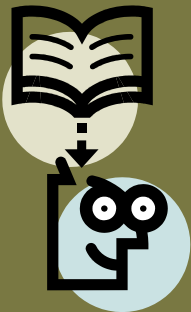
- A survey is conducted by the Division of Education and Training only upon written request by the employer or authorized company representative, whereas an enforcement inspection is conducted by the Division of Compliance without prior notice to the employer.
- Monetary penalties are not assessed for hazards identified by a consultant during consultative surveys; however, the employer agrees to correct all "SERIOUS HAZARDS" identified, whereas violations identified by the compliance officer may result in citations which have to be corrected and may be accompanied by penalties.
- All results of a survey are considered confidential in that the Division of Compliance does not have access to these files unless the employer refuses to correct any serious hazards identified during the survey.
- Employers are encouraged to have employee involvement in consultative surveys and discussion of the hazard.

Employers seeking a consultative survey must submit a letter of request to:

Director
Division of Education and Training
Kentucky Department of Labor
1047 U.S. 127 South, Suite 4
Frankfort, KY 40601-4381

RMSC

.....helping you chart
the right course.



RMSC
9100 Marksfield Rd.
Louisville, KY 40222

Phone:
(502) 326-5900

Fax:
(502)326-5909

E-Mail
pfox@rmsc.com